



alcomij
horticulture solutions

Optinova™

A global greenhouse roof system

Extremely solid
Significantly lower light interception
Maximum air and water tightness

Optinova™ greenhouse roof system

A robust, sound and diverse greenhouse roof system that copes brilliantly whether it's snowing, stormy or the sun is high in the sky. It offers optimum light transmission and maximum air and water tightness. It is also suitable for all types of greenhouse roofing and is easy to install. The Optinova™ has it all.

For the Optinova™ design, the Alcomij Research & Development team incorporated the best from previous Euronova and Alkupro systems: solid quality, simple installation and a sleek

finish. This, supplemented with many years' experience and knowledge and combined with today's technology and high-quality European materials, has enabled the development of an even stronger greenhouse roof system. One that, under all possible geographic conditions, is suitable for a wide range of horticultural solutions across the world.

An extremely strong design

What makes Optinova™ a global greenhouse roof system? The new greenhouse roof system is perfect for

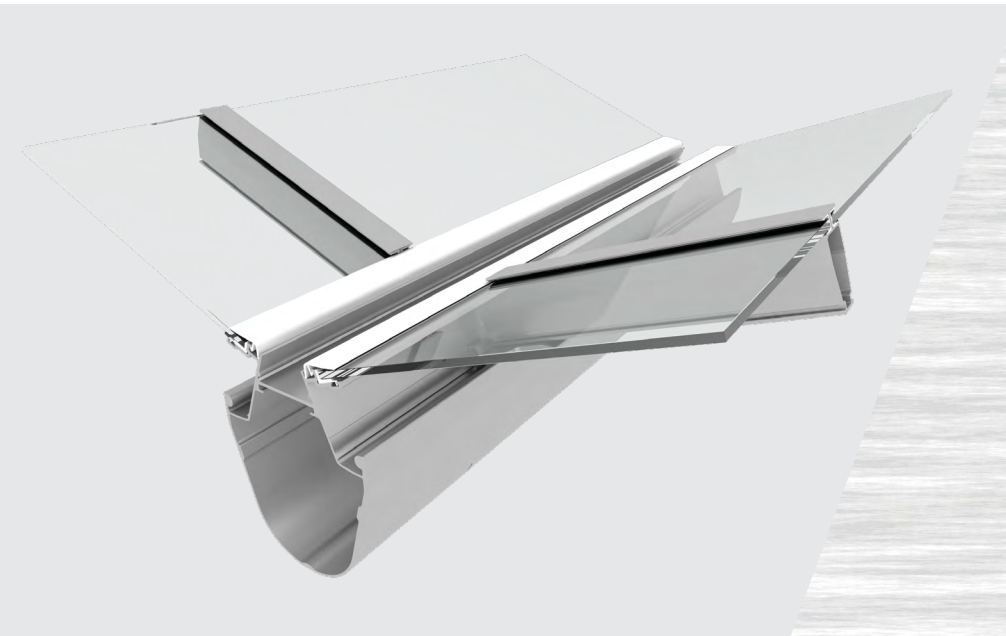
growing locations that are characterised by extreme geographic conditions. The system connections are actually strengthened, enabling even better absorption of extreme forces. This makes the system an excellent choice for higher loads, and larger roof and bay sizes can be realised. The optimised profile form, combined with the use of high-quality European materials, makes the Optinova™ extremely solid.

The smart gutter-column connection contributes to a simple storm-proof installation without welding. This,

combined with the new bar-gutter connection and the newly designed and much more rigid ridge-bar connection mean you can be certain that the Optinova system will cope perfectly in high winds. In short, the Optinova™ is extremely strong!



The optimised profile form, combined with the new bar-gutter connection makes the roof system extremely solid.



Glass is framed on four sides in PVC. Renewed gutter design for lower light interception.

A practical and safe, water and airtight construction

The Optinova™ guarantees safe, practical and simple installation. The installation method, whereby the bar is connected in a smart yet simple way and forms a perfect connection with the gutter in combination with the glass framed on four sides in PVC, enables the greenhouse to be erected and made watertight and airtight quickly and in accordance with the latest standards.

With the Optinova™ gutter, rain and condensation water are drained

separately. This enables the water to be reused in a simple way, something that can offer considerable cost savings for your clients. It also means less impact on the environment!

Does your customer have a Euronova or Alkupro greenhouse roof system that he/she wishes to extend? No problem! The extensive and optimised set of profiles enable the Optinova™ to be connected easily and seamlessly to your existing greenhouse, in a sustainable way and in accordance with the latest standards for greenhouse construction.

Optinova™ can be easily combined with other Alcomij products, such as the Slimline greenhouse gable system. This contemporary gable design has a wide glass support, is flat and is suitable for all common greenhouse types. The various types of gables are also easy to install and can be equipped with single glazing, 2 layers of single glazing and 16mm polycarbonate plates.

Significantly lower light interception
The Optinova™ offers many possibilities. For instance, the Optinova™ design enables various roof bar heights to

be combined in a greenhouse roof, which makes it possible for you to better respond to your client's specific cultivation wishes and requirements.

The Optinova™ gutter is designed to ensure significantly lower light interception. In combination with the correct bar, you can achieve optimal light reflection, which creates a significantly higher light transmission compared with our previous systems.

Customised solution

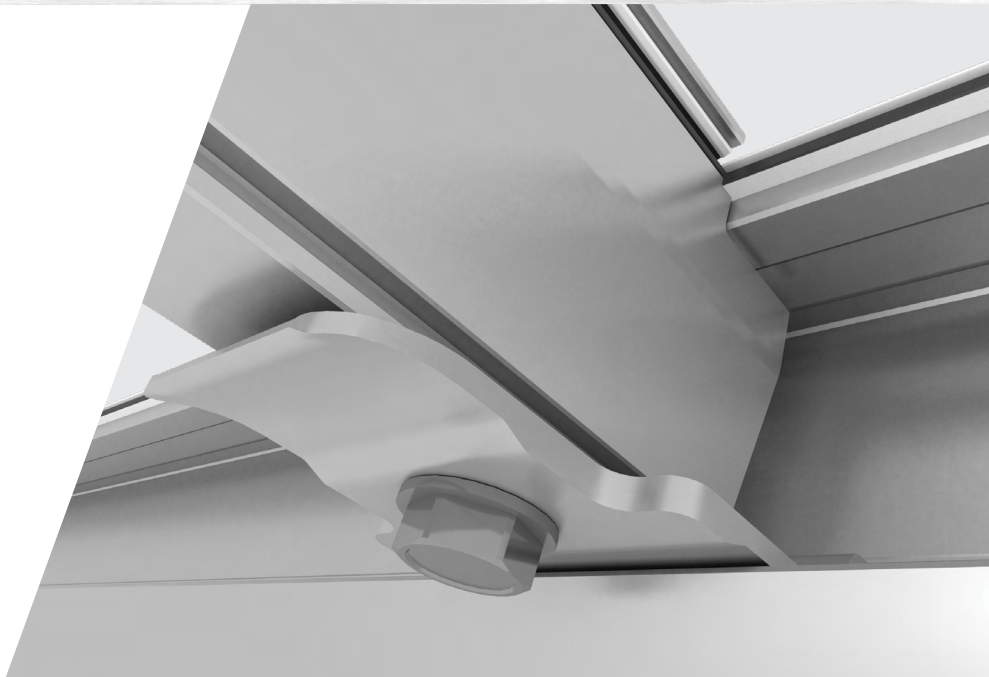
The Optinova™ greenhouse roof is calculated and produced in-house especially for you using the very latest equipment and machinery. This roof system is customised, which means that our contact with you is extremely important. We support you and your client every step of the way in selecting the most comprehensive and optimal Optinova™ system. To ensure a new greenhouse roof system meets all local applicable standards and loads, we used the 'Glazenstad' program, which was developed especially by TNO.

Technical specifications of the Optinova™:

- The glass is framed on four sides in PVC as standard. In the gutter edge, optional protection with an aluminium end strip is available. Ideal for growing locations characterised by high UV radiation.
- The Optinova™ gutter is designed to ensure significantly lower light interception. In combination with the correct roof bar, optimal light reflection can be achieved, which creates a significantly higher light

- transmission compared with our previous systems.
- The special design and updated VGS in the roof bar ensures a higher water tightness, in accordance with the latest standards.
 - The roof bar is installed in storm-proof way, using a so-called fixing hook. This hook is easy to position on the machine-stamped pattern in the gutter. It is easy to secure to the gutter with just one click, enabling you to then quickly and easily insert the roof bar. By then screwing the roof bar firmly to the fixing hook,

- you create an extremely strong and tight connection with the gutter.
- The optimised profile form and connections contribute to a stronger greenhouse roof.



Storm proof fitting of the roof bar using the fixing hook. New designed and updated VGS in the roof bar for improved sealing.



Alcomij

Hagemanstraat 66
2691 WR 's-Gravenzande
Netherlands

T +31 (0)174 44 53 00
E info@alcomij.com
I www.alcomij.com

Please feel free to visit our website
for an overview of our certificates.

Alcomij is part
of the Hordijk Group.